

Installation Guide

Visure Authoring 8.1

Table of Contents

- 1 Introduction..... 3
- 2 Compatibility:..... 3
- 3 System Requirements..... 3
 - 3.1 Dependencies:..... 3
 - 3.2 Operating Systems..... 3
 - 3.3 Cloud Services..... 4
 - 3.4 Browsers..... 4
 - 3.4.1 Desktop browsers:..... 4
 - 3.4.2 Mobile browsers:..... 4
- 4 Installation Instructions..... 4
- 5 Database connection:..... 12
- 6 License..... 12
- 7 Troubleshooting..... 13
 - 7.1 Empty descriptions or descriptions remain permanently loading..... 13
 - 7.2 How can I change security token timeout?..... 13
 - 7.3 How can I install IIS..... 14



1 Introduction

This guide contains the necessary information to perform a correct installation of Visure Authoring.

Visure Authoring is a full web-based application that allows internal and external stakeholders to participate in your team's Requirements Management process.

Visure Authoring shares the same database as Visure Requirements ALM Platform which means that users may see the same information regardless of whether they use the desktop client or Visure Authoring. Changes made with one will be available on the other.

Visure Authoring provides a simple, yet powerful interface that allows users to create requirement documents and traceability, enter comments and review specifications.

2 Compatibility:

Visure Authoring 8.1 is compatible with the following versions:

Visure Requirements 8.1

Visure Server 8.1

3 System Requirements

Visure Authoring requires IIS 7.5 or higher to be installed and enabled.
The selected port in the installation needs to be open.

3.1 Dependencies:

The following components are provided with the installer:

- ASP.NET Core Hosting Bundle 8.0.3
- Visual C++ Redistributable for Visual Studio 2015-2022 x64

3.2 Operating Systems

Microsoft Windows Server 2008 / Microsoft Windows Server 2008 R2 64 bit

Microsoft Windows Server 2012 / Microsoft Windows Server 2012 R2 64 bit

Microsoft Windows Server 2016 64 bit

Microsoft Windows Server 2016 64 bit

Microsoft Windows Server 2019 64 bit

Microsoft Windows Server 2022 64 bit

Microsoft Windows 10 64-bit

Microsoft Windows 11 64-bit



3.3 Cloud Services

Amazon Web Services (AWS)

Google Cloud Platform (GCP)

3.4 Browsers

3.4.1 Desktop browsers:

Chrome (latest stable version)

Internet Explorer 11

Microsoft Edge

Mozilla Firefox (latest stable version)

Safari on Mac OS X only (latest stable version)

3.4.2 Mobile browsers:

Chrome (latest stable version)

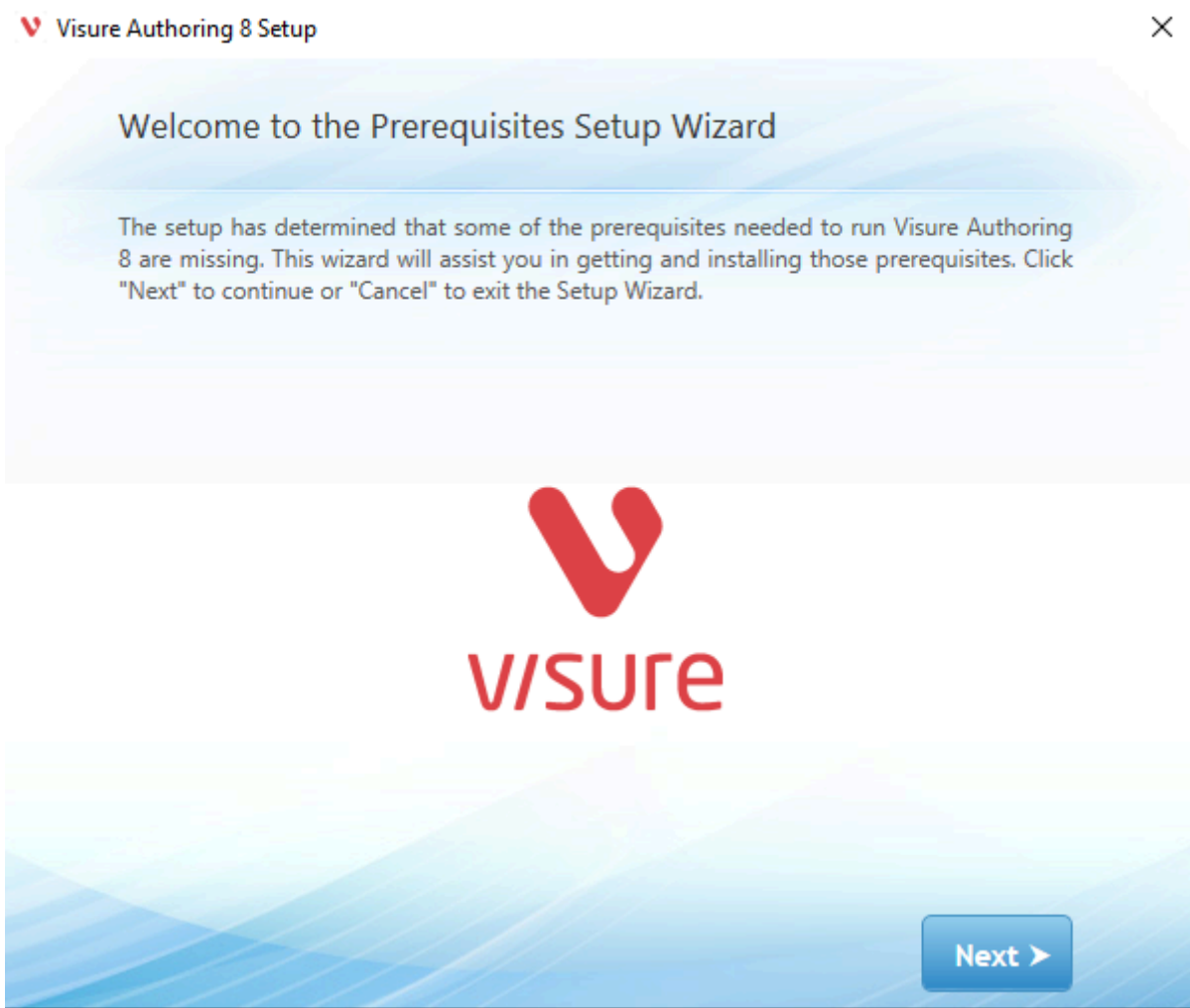
Safari on iOS only (latest stable version)

Android 4.0 (Ice Cream Sandwich)

4 Installation Instructions

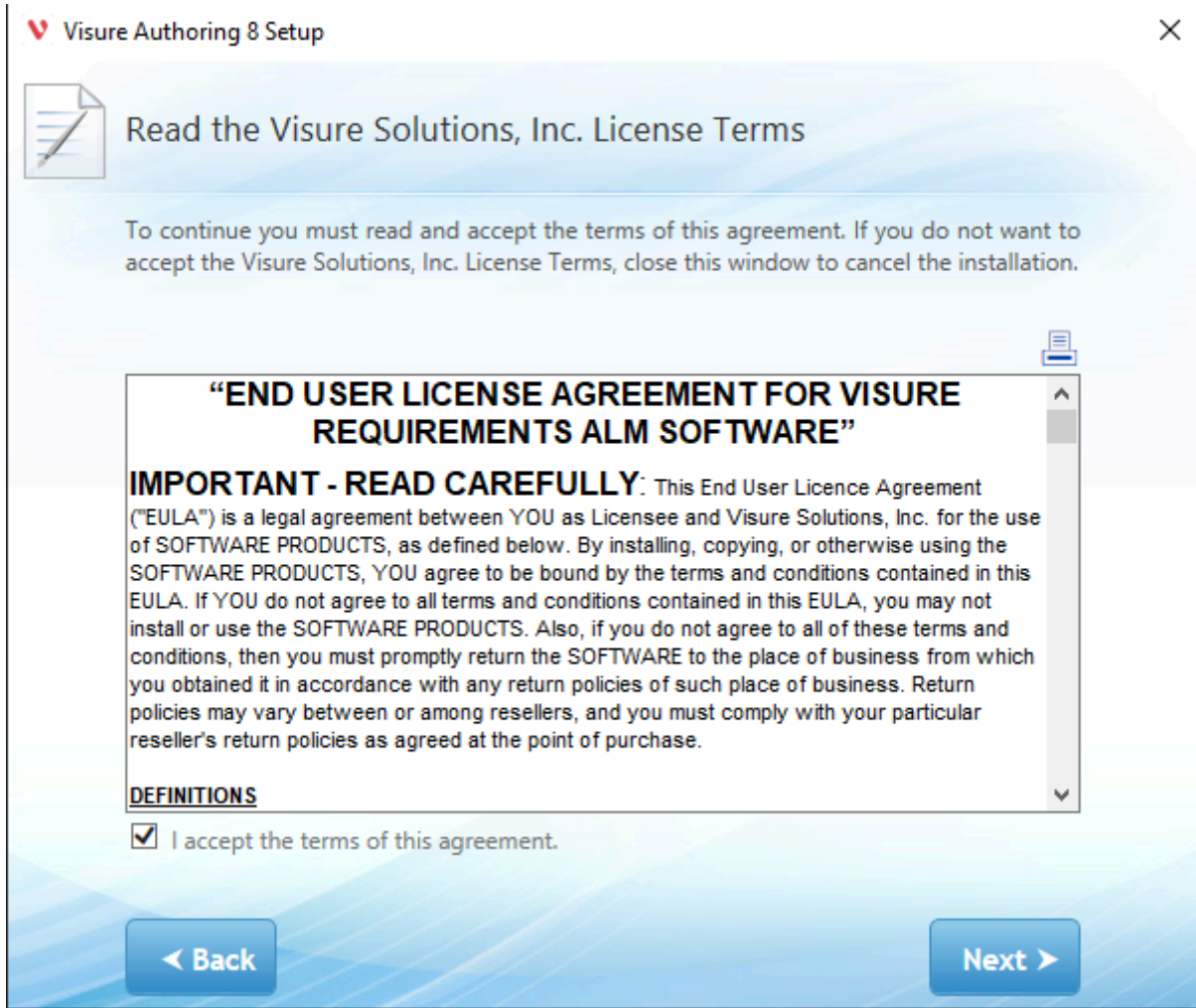
1. Download Visure Authoring installer.
2. Run the installer with a windows administrator account
3. Follow the prompts to install Visure Authoring 8.1:





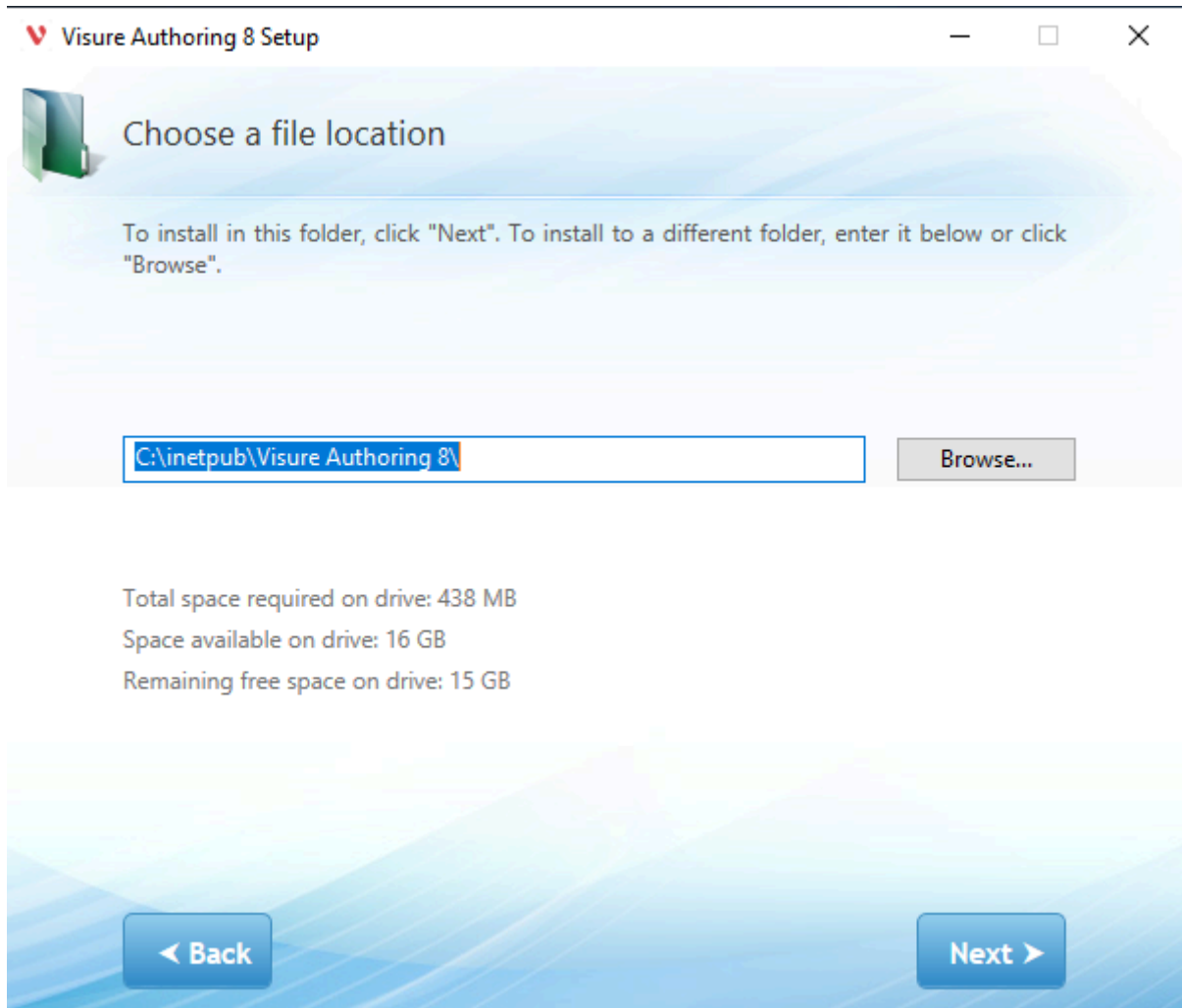
Carefully read the EULA and accept it if you agree with the terms:





Choose installation folder:





Select installation type:

Web Site will create the Visure Authoring website in IIS in the selected port. Select the public domain of the server, e.g. visuresolutions.com, or the server's name e.g. VISURE-SERVER.

Web Application will create a new application in an existing Web Site. The application will be accessible via the existing website, port and the selected Alias.

The server name or domain will be extracted automatically from the IIS selected Web Site. If the domain is not the appropriate one, you will be able to modify it in the next step of the installation process



♥ Visure Authoring 8 Setup
✕

Installation Type

Server name or Domain (e.g. visuresolutions.com)

Select the type of web installation you want for Visure Authoring 8

Web Site

Name: Port:

Web Application

Web Site: ▾

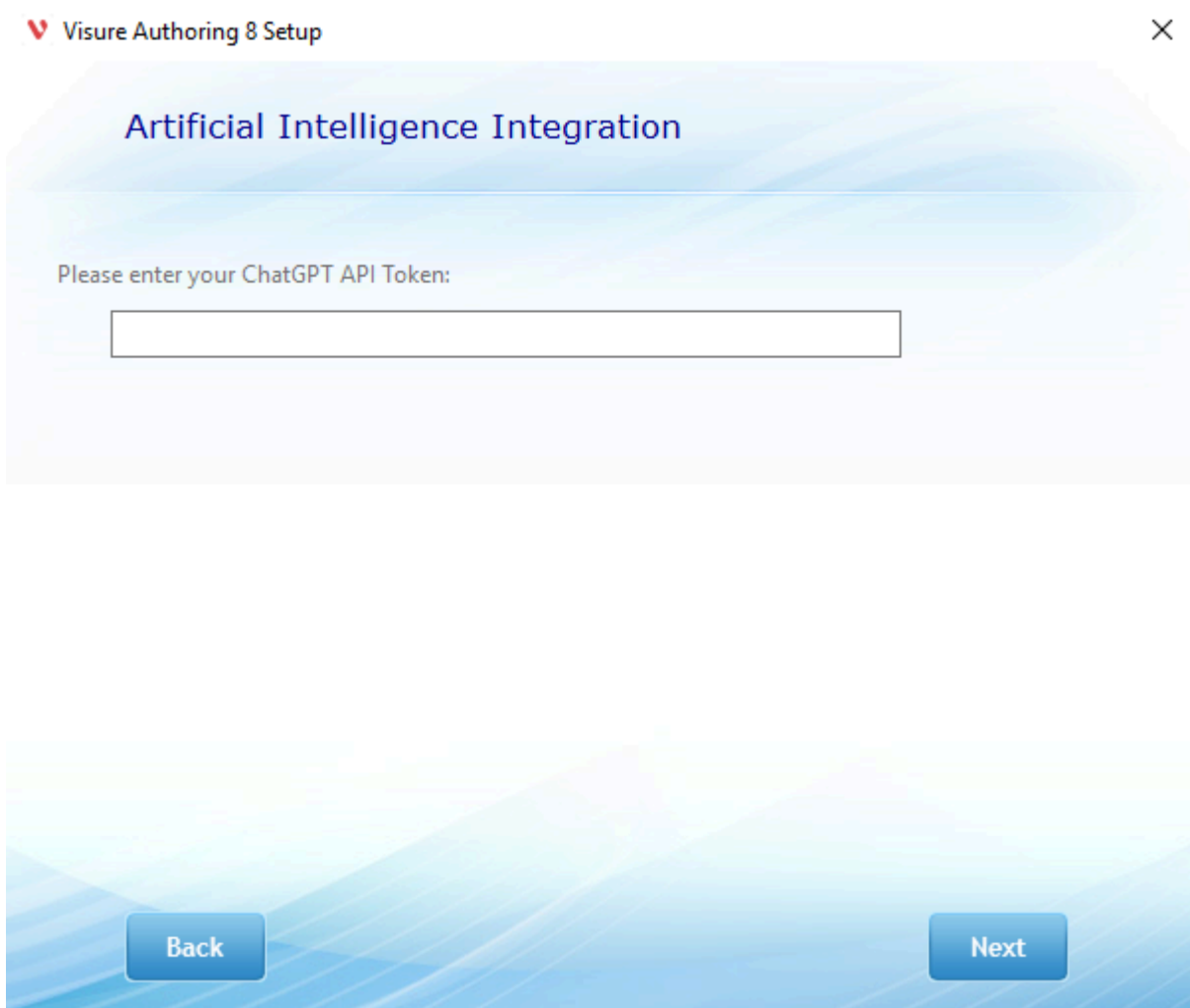
Alias:

Back
Next

The Public URL displays an automatically generated URL based on the previous step. In this step you will be able to manually change the server name or domain with the correct one, if necessary.



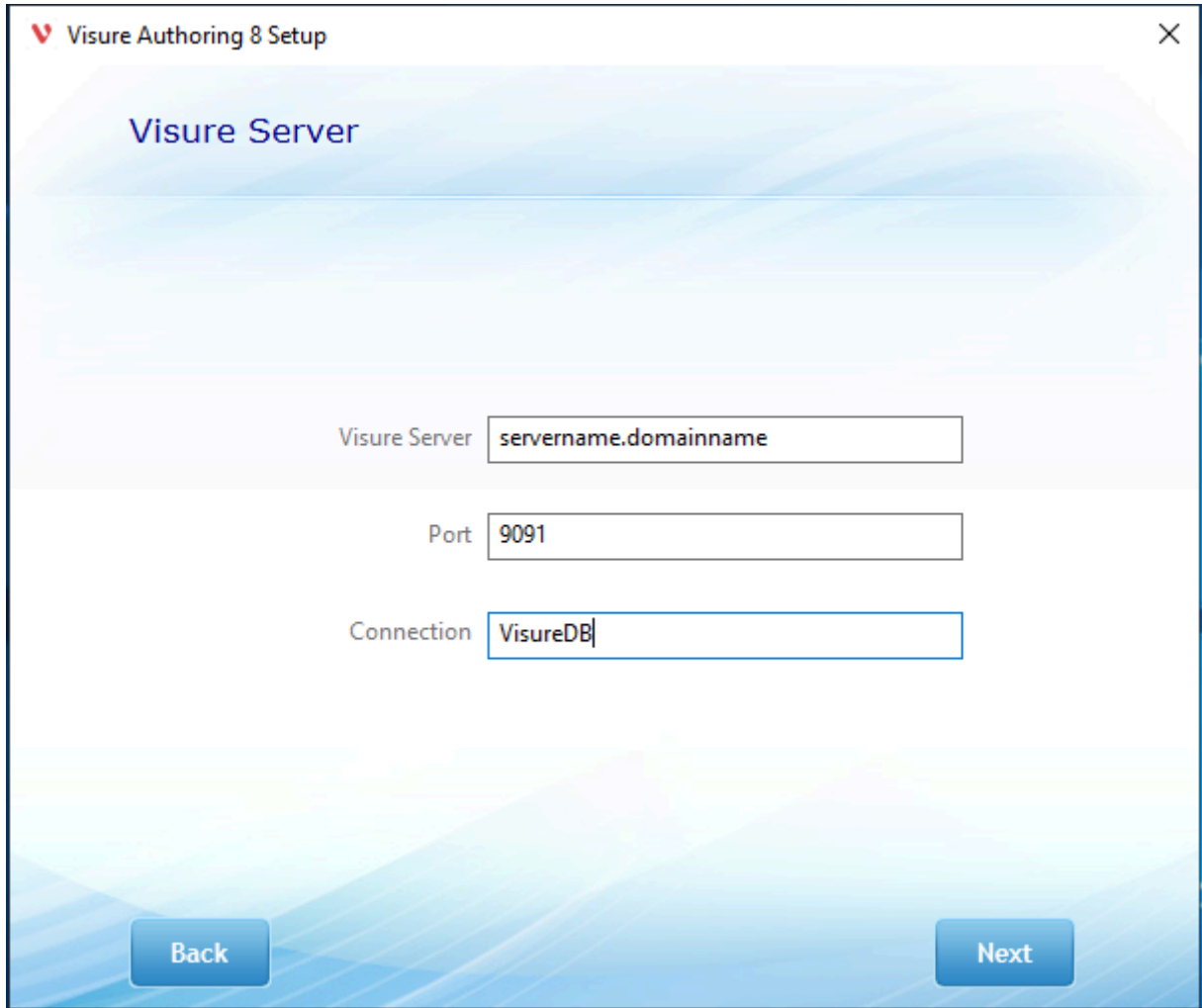
Introduce your ChatGpt token for AI Integration



Select the Visure Server and connection. The Visure Authoring installation allows to manually enter the name of any of the connections available in the Visure Requirements ALM 7 Server. This information may be entered manually after the installation in the "RPCConnection" tag in the appsetting.json file, located in the installation folder, typically C:\inetpub\Visure Authoring 7. You will need administration rights to update this file. The appsettings.json file should look similar to

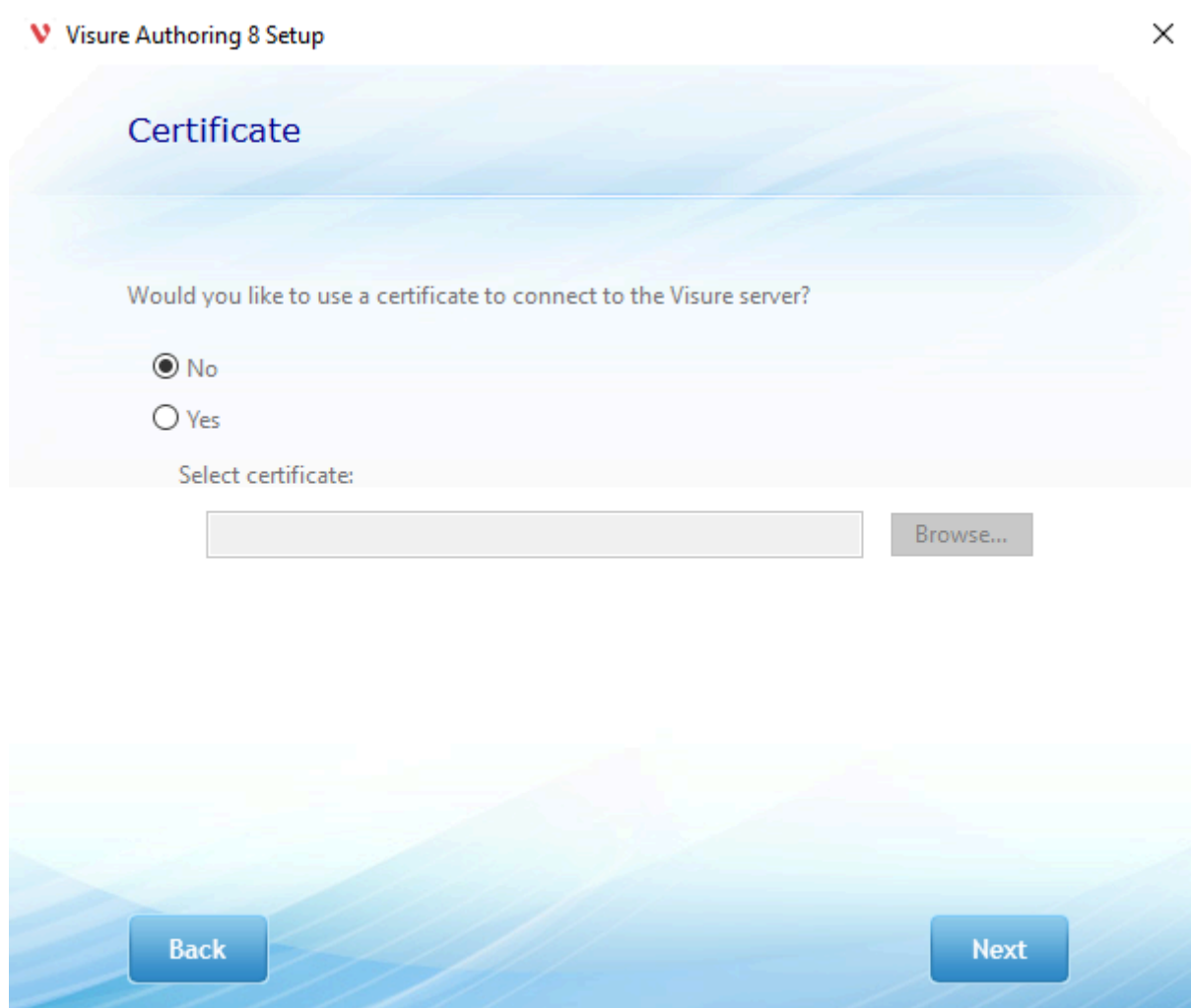
```
"Database": {
  "RPCServer": "VISURE-SERVER",
  "RPCPort": 9091,
  "RPCConnection": "Test Connection"
},
```



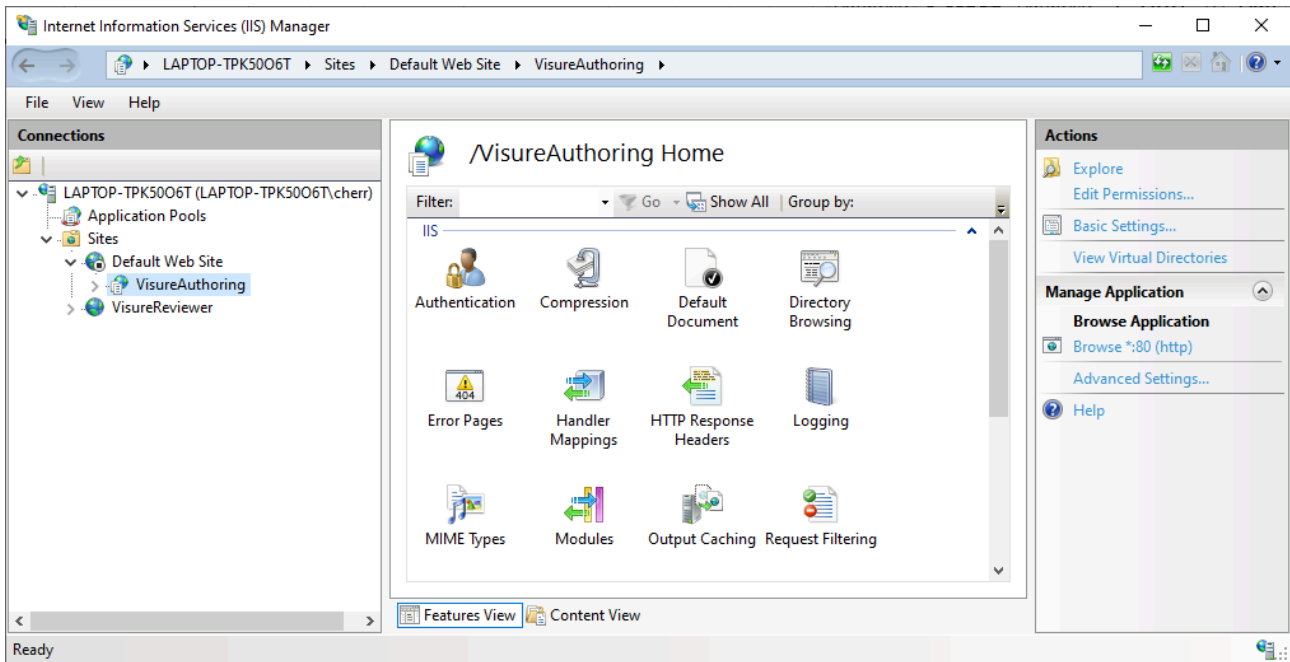


The screenshot shows the 'Visure Authoring 8 Setup' window with the 'Visure Server' step. It features three input fields: 'Visure Server' containing 'servername.domainname', 'Port' containing '9091', and 'Connection' containing 'VisureDB'. At the bottom, there are 'Back' and 'Next' buttons.

Select security certificate file (.crt) in the case that Visure Server has been installed with security certificate:



A new web site or web application will be added in IIS.



After installing Visure Authoring a restart of IIS is required.

5 Database connection:

Once installed, and if this information was not entered during the installation, or needs to be modified, we need to configure the connection to the database in the Visure Server. This connection to the database is configured in the file appsettings.json located in the installation folder, typically C:\inetpub\Visure Authoring 8, by default.

Edit the file appsettings.json with a text editor (executed with administrator rights) and modify the "RPCConnection" section:

```
"RPCServer": "visure server",
"RPCPort": 9091,
"RPCConnection": "Production Database"
```

RPC connection must be the same as shown in Visure Server 7 Administration Center

6 License

Visure Authoring connects to a Visure Server and consumes a VR Client license, the same as Visure Requirements ALM 8.



7 Troubleshooting

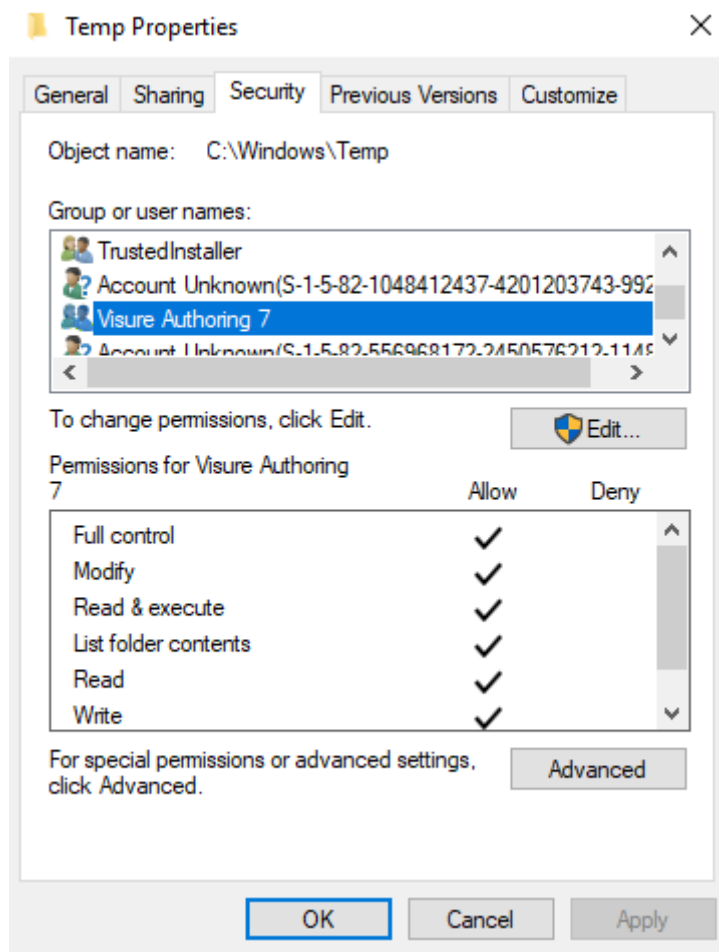
7.1 Empty descriptions or descriptions remain permanently loading

Descriptions are cached in the Windows Temp folder in the server, and Visure Authoring should have access rights to this folder. If descriptions never end up loading in Visure Authoring, give permissions to the following user over the descriptions folder:

C:\Windows\Temp

Access the c:\Windows folder

Properties > Security Tab > Edit > Add... > **IIS AppPool\Visure Authoring 8** > Check Names > Ok > Full Control



7.2 How can I change security token timeout?

If you want to change the default token lifetime (by default 1200 secs) you should Run notepad with administrator rights and edit the file "C:\inetpub\Visure Authoring 7\appsettings.json"

Change the parameter "sessionTimeour" under "AngularSettings" section

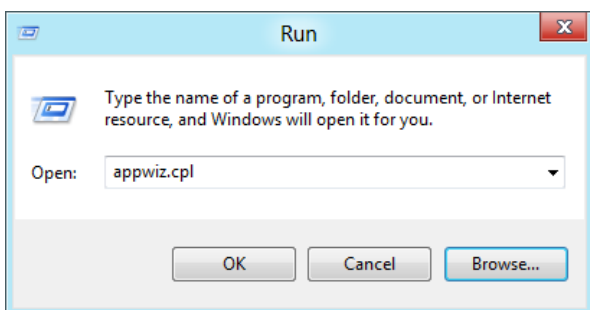


```
"AngularSettings": {
  "sessionTimeout": "1200", //seconds
  "version": "7.0.0.4036",
  "maxUploadFileSize": "64" //MB
}
```

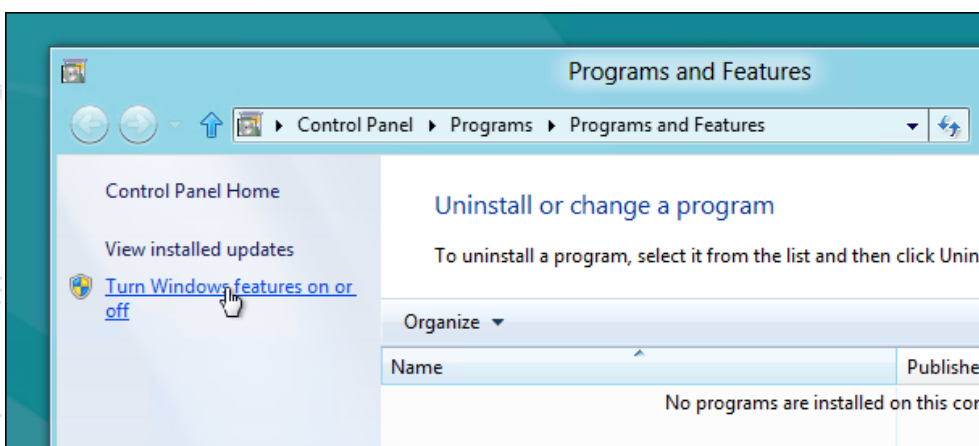
7.3 How can I install IIS

Internet Information Service is a windows feature that needs to be enabled.

To install it, press the Windows + R key combination to bring up a run box, then type appwiz.cpl and press enter.

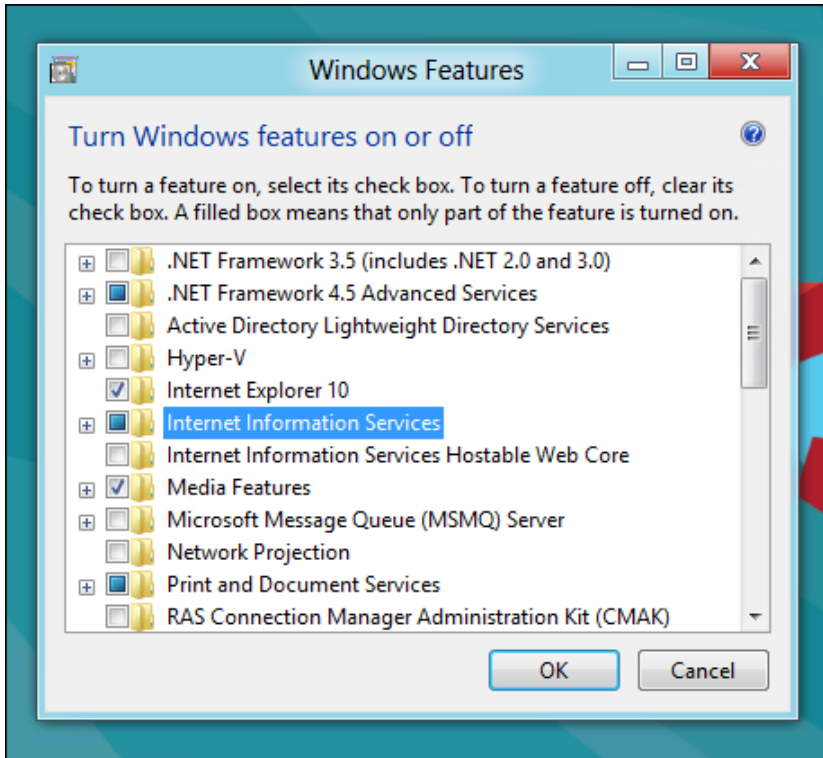


This will open the Program and Features part of Control Panel, on the left hand side click on the "Turn Windows features on or off" link.



Now click on the Internet Information Services check box.





After clicking OK, this dialog will appear on your screen for a while.

