



Installation Guide

Visure Contributor 7

DATE

October 22, 2022

AUTHOR

Visure Solutions, Inc.

Table of Contents

1	Introduction	3
2	Compatibility:	3
3	System Requirements	3
3.1	Dependencies:	3
3.2	Operating Systems	3
3.3	Cloud Services	4
3.4	Browsers	4
3.4.1	Desktop browsers:	4
3.4.2	Mobile browsers:	4
4	Installation Instructions	4
5	Database connection:	13
6	License	14
7	Troubleshooting	14
7.1	How can I change the logo?:	14
7.2	How can I change security token timeout?	14
7.3	How can I install IIS?	15
7.4	Empty descriptions (Windows Server 2019).	16

1 Introduction

This guide contains the necessary information to perform a correct installation of Visure Contributor.

Visure Contributor is a fully web-based application that allows internal and external stakeholders to participate in your team's review process.

Visure Contributor shares the same database as Visure Requirements ALM Platform, which means that you can display the same or restricted information in the Contributor. Being able to restrict the information that you want to share in the Contributor is particularly helpful when you want to create an efficient review process with stakeholders that are outside your organization. Customers' requirements reviews are particularly easy with Visure Contributor as you can decide to share only the customer's requirements from your database and to give your customer only restricted user rights.

2 Compatibility:

Visure Contributor 7 is compatible with the following versions:

Visure Requirements 7

3 System Requirements

Visure Reviewer requires IIS 7.5 to be installed and enabled.
The selected port in the installation needs to be open.

3.1 Dependencies:

The following components are provided with the installer:

- [ASP.NET Core Hosting Bundle 6.0.2](#)
- Visual C++ Redistributable for Visual Studio 2015-2019 x64
- Visual C++ Redistributable for Visual Studio 2013 Update 5 x64

3.2 Operating Systems

- Microsoft Windows Server 2008 / Microsoft Windows Server 2008 R2 64 bit
- Microsoft Windows Server 2012 / Microsoft Windows Server 2012 R2 64 bit
- Microsoft Windows Server 2016 64 bit
- Microsoft Windows Server 2016 64 bit
- Microsoft Windows 10 64-bit

- Microsoft Windows 11 64-bit

3.3 Cloud Services

- Amazon Web Services (AWS)
- Google Cloud Platform (GCP)

3.4 Browsers

3.4.1 Desktop browsers:

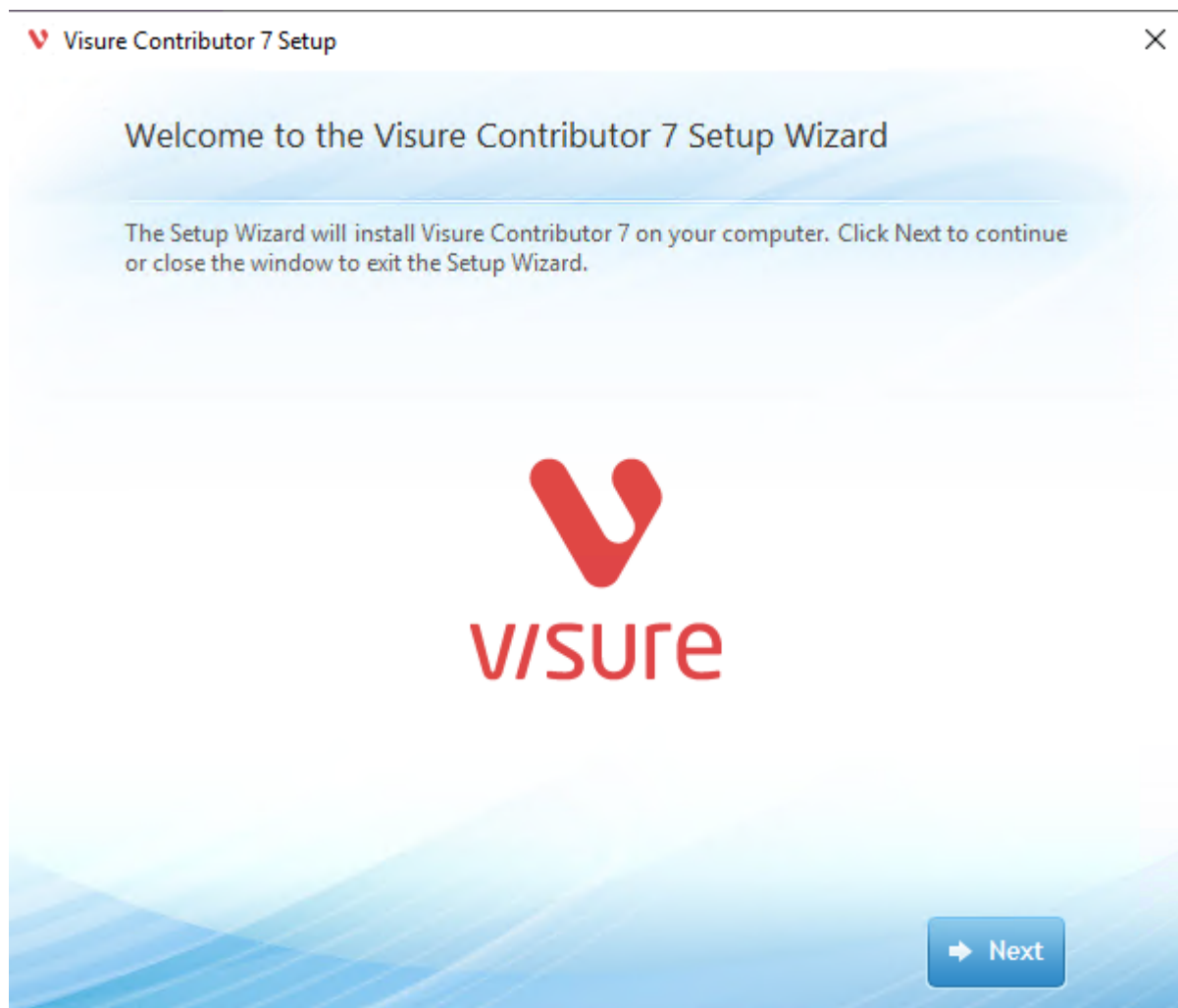
Chrome (latest stable version)
Internet Explorer 11
Microsoft Edge
Mozilla Firefox (latest stable version)
Safari on Mac OS X only (latest stable version)

3.4.2 Mobile browsers:

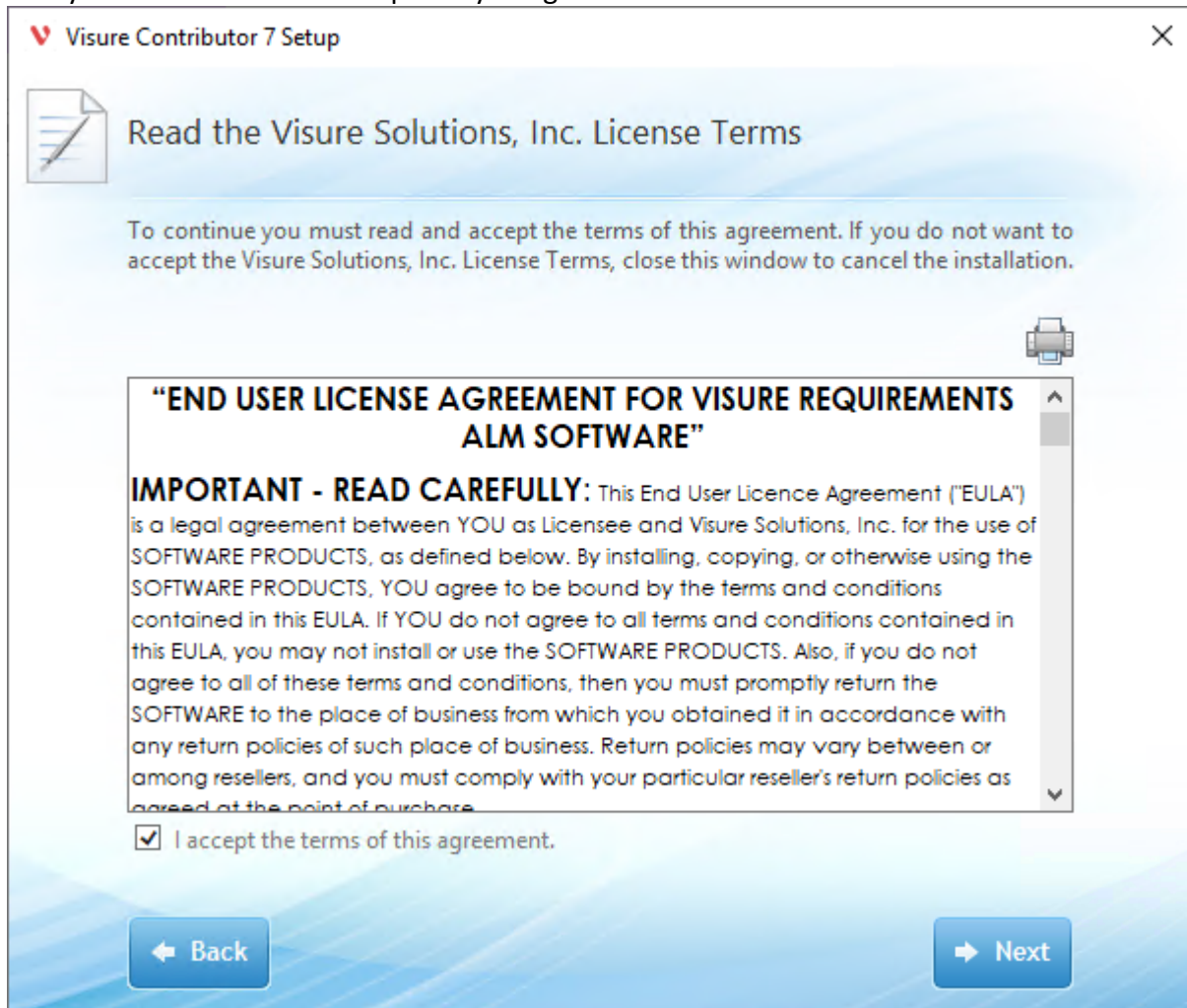
Chrome (latest stable version)
Safari on iOS only (latest stable version)
Android 4.0 (Ice Cream Sandwich)

4 Installation Instructions

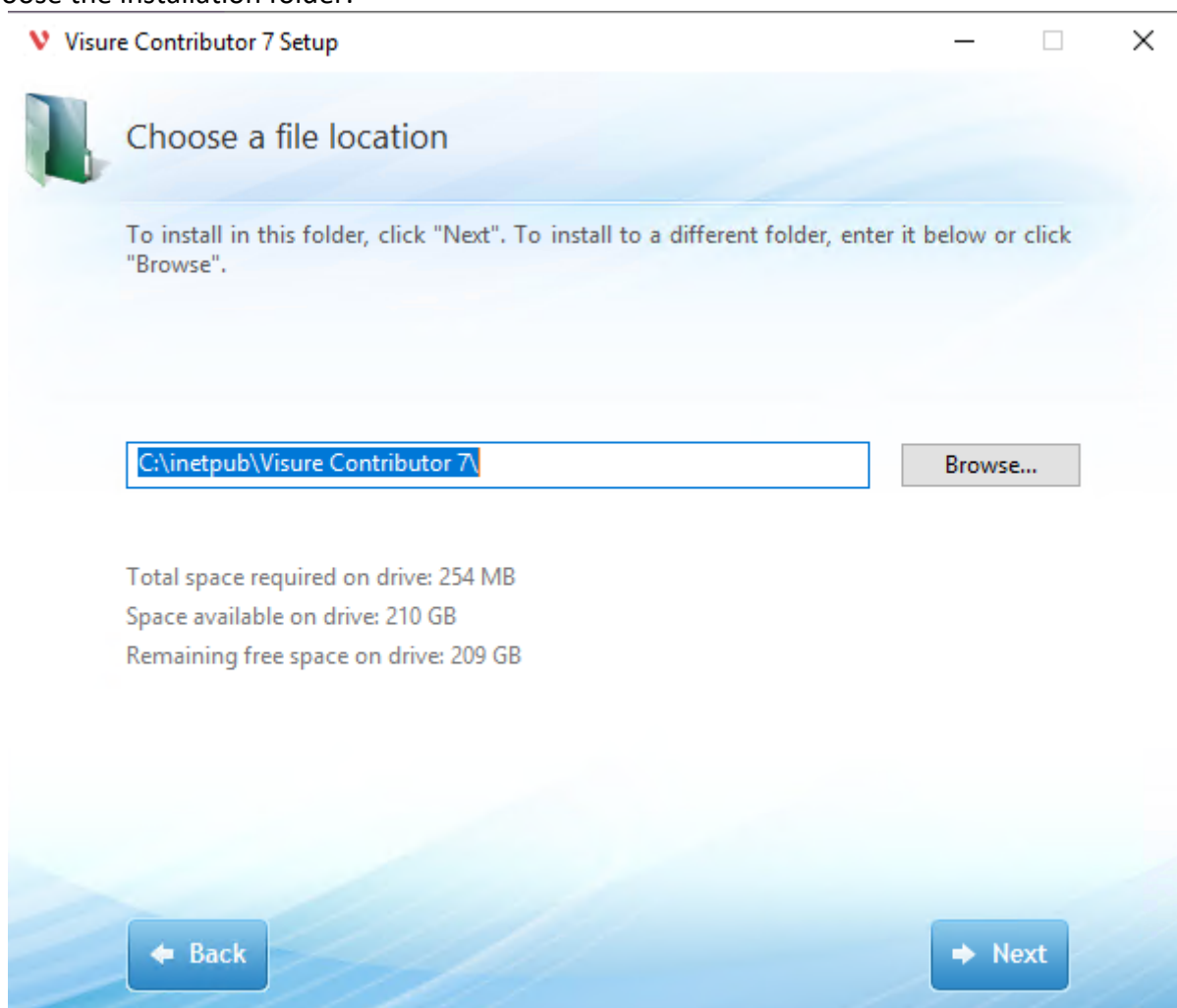
1. Download Visure Contributor installer.
2. Run the installer with a Windows Administrator account
3. Follow the prompts to install Visure Contributor:



Carefully read the EULA and accept it if you agree with the terms:




Choose the installation folder:



Select installation type:

- Web Site will create the Visure Contributor website in IIS on the selected port. Select the public domain of the server, e.g., visuresolutions.com, or the server's name e.g. VISURE-SERVER.
- Web Application will create a new application in an existing Web Site. The application will be accessible via the existing website, port, and the selected Alias. The server name or domain will be extracted automatically from the IIS selected Web Site. If the domain is not the appropriate one, you will be able to modify it in the next step of the installation process.

 Visure Contributor 7 Setup
 ✕

Installation Type

Server name or Domain (e.g. visuresolutions.com)

Select the type of web installation you want for Visure Contributor 7

☐ Web Site

Name:
 Port:

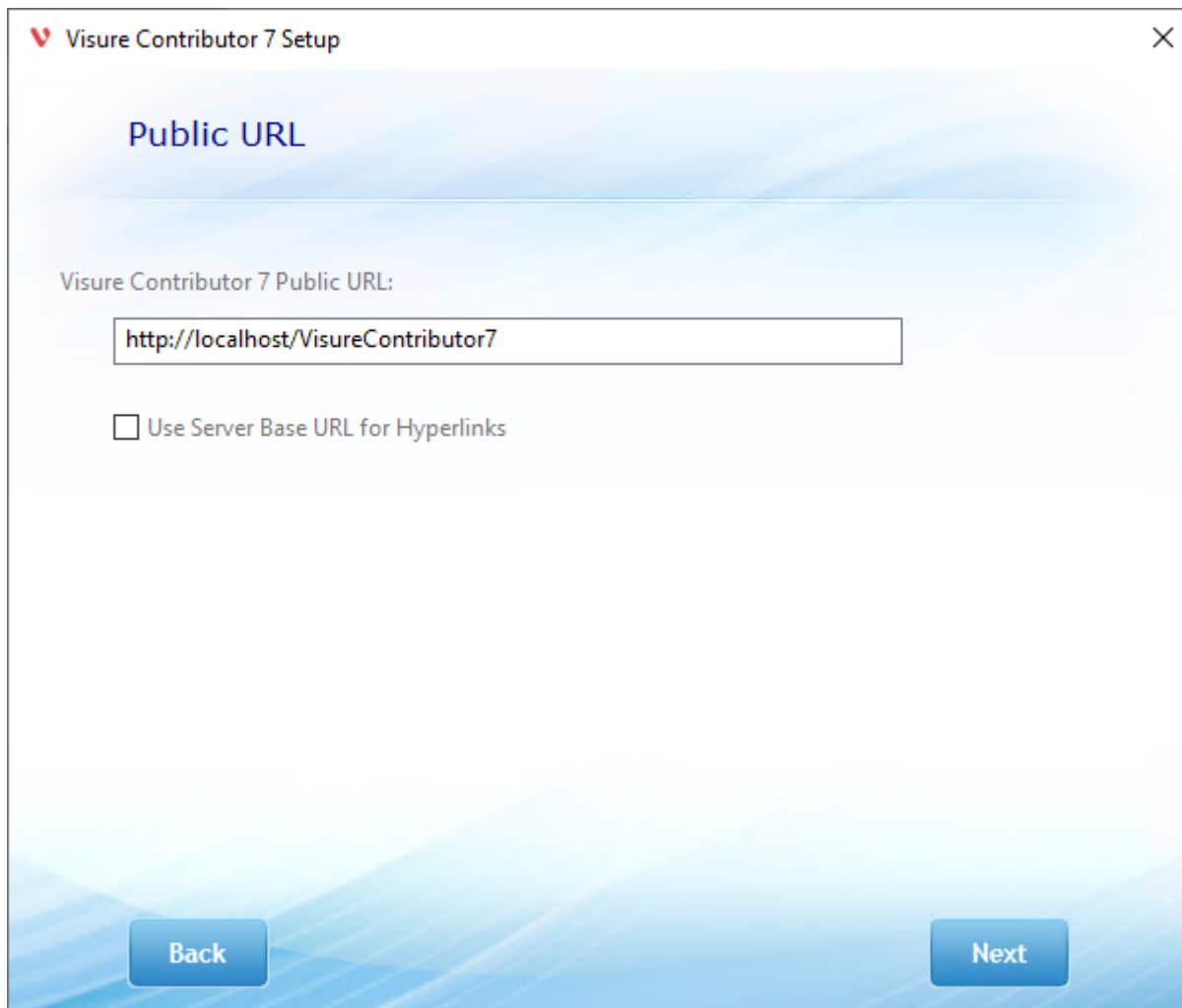
☒ Web Application

Web Site:

Alias:

Back
Next

The Public URL displays an automatically generated URL based on the previous step. In this step, you will be able to manually change the server name or domain with the correct one, if necessary.



Public URL

Visure Contributor 7 Public URL:

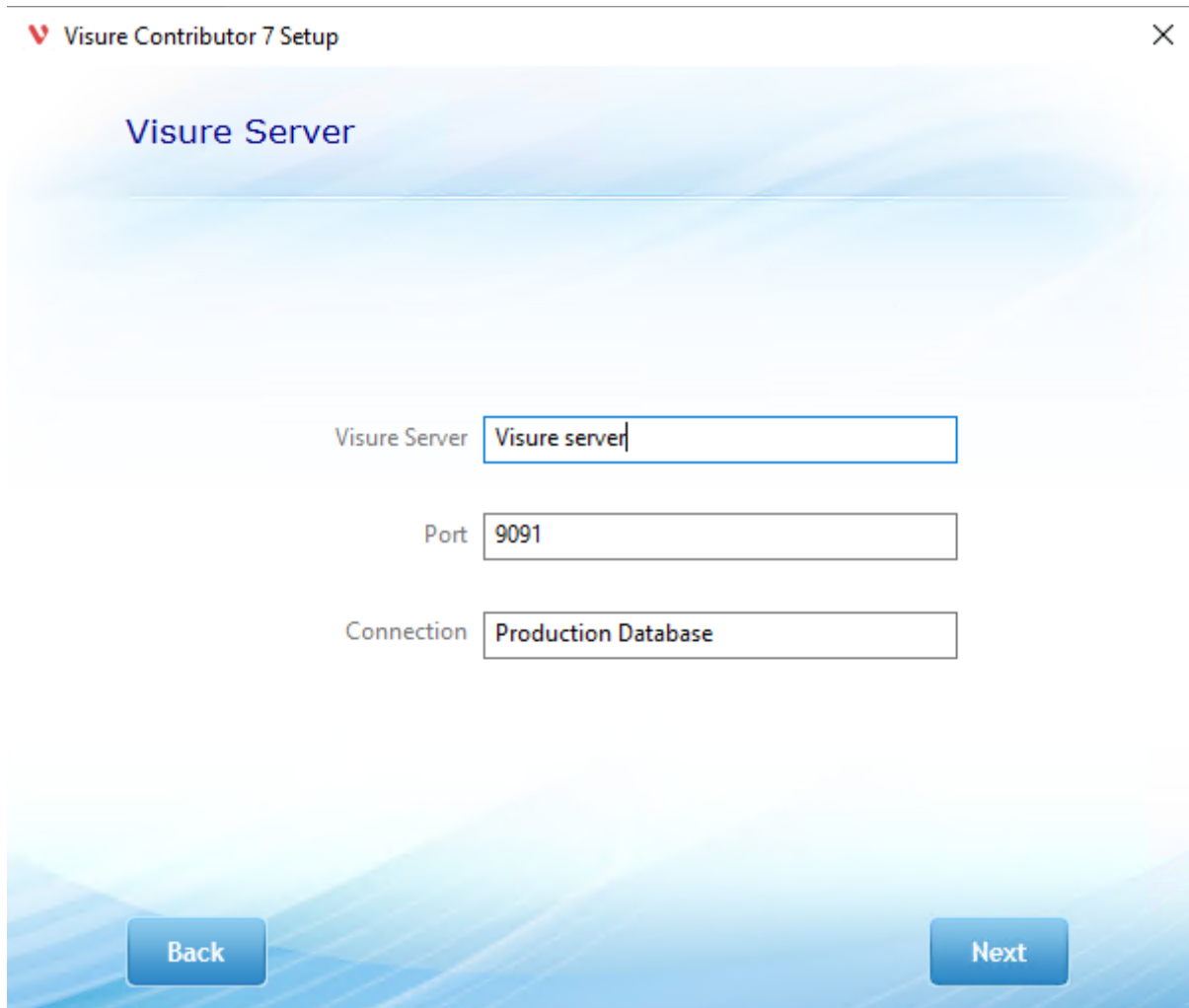
☐ Use Server Base URL for Hyperlinks

Back **Next**

Select the Visure Server and connection. The Visure Contributor installation allows you to manually enter the name of any of the connections available in the Visure Requirements ALM 6 Server.

This information may be entered manually after the installation in the "RPCConnection" tag in the appsetting.json file, located in the installation folder, typically "C:\inetpub\Visure Contributor 7". You will need administration rights to update this file. The appsettings.json file should look similar to

```
"Database": {
  "RPCServer": "VISURE-SERVER",
  "RPCPort": 9090,
  "RPCConnection": "Test Connection"
},
```



Visure Contributor 7 Setup

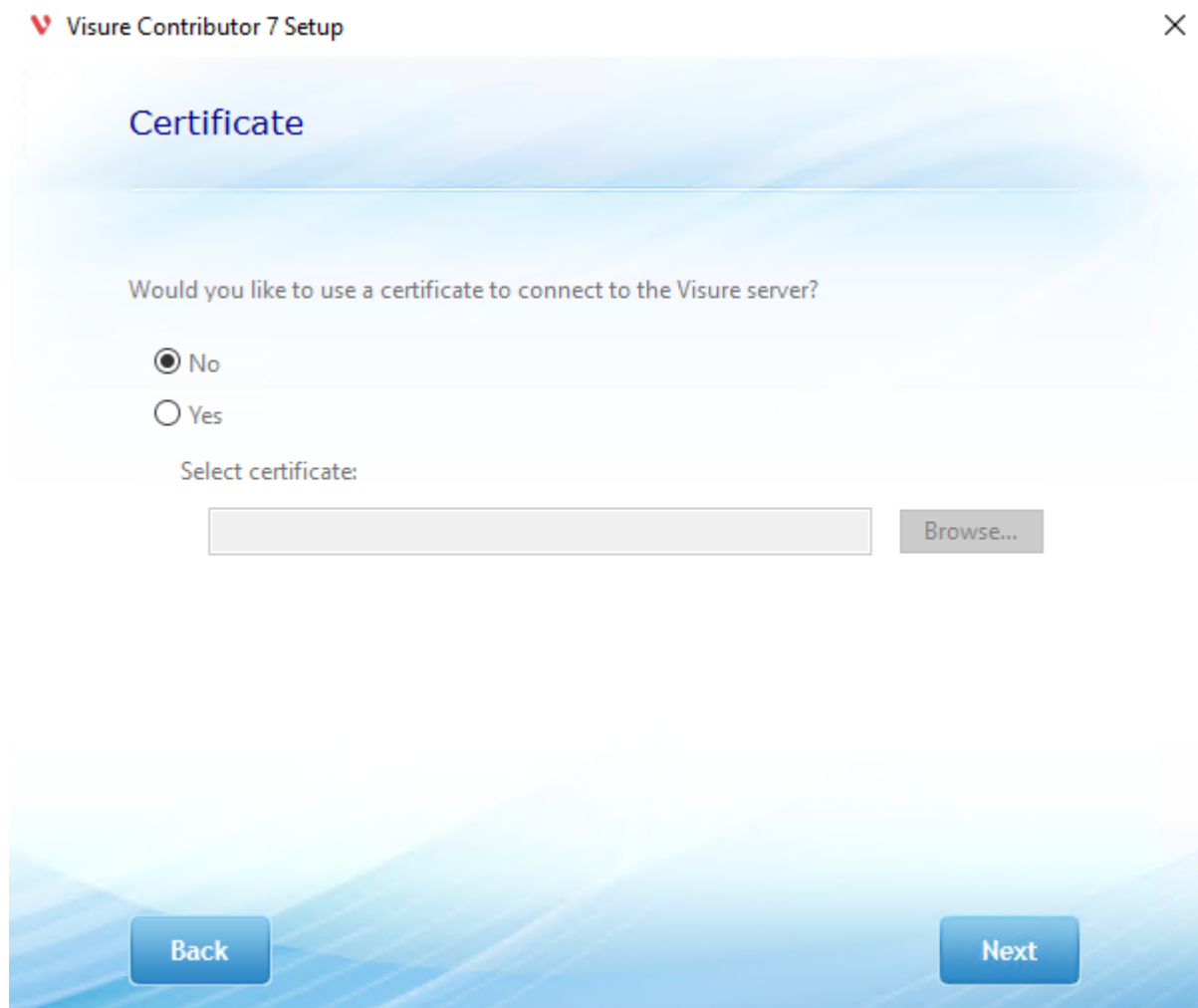
Visure Server

Visure Server

Port

Connection

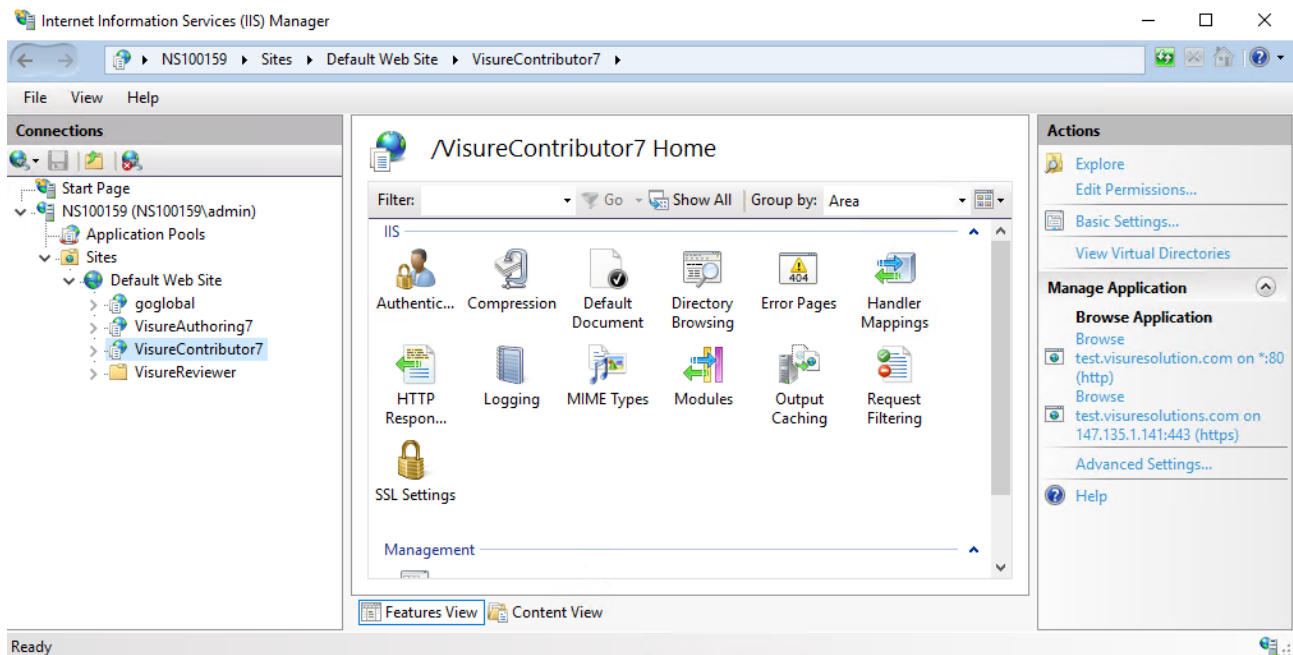
Back Next



Confirm installation:



A new web site or web application will be added in IIS.



After installing Visure Contributor a restart of the IIS server is required.

5 Database connection:

Once installed, and if this information was not entered during the installation, or needs to be modified, we need to configure the connection to the database in the Visure Server. This connection to the database is configured in the file `appsettings.json` located in the installation folder, typically `C:\inetpub\Visure Contributor 7`, by default.

Edit the file `appsettings.json` with a text editor (executed with administrator rights) and modify the "RPCConnection" section:

```
"Database": {

"RPCServer": "visure server",
"RPCPort": 9091,
"RPCConnection": "Production Database"
},
```

RPC connection must be the same as shown in Visure Server 7

6 License

Visure Contributor connects to a Visure Server and consumes a Visure Contributor license.

7 Troubleshooting

7.1 How can I change the logo?:



The logo displayed can be changed by substituting the logo.jpg file available in “C:\inetpub\wwwroot\Visure Contributor 7\wwwroot\assets\imgs” to your company’s logo file.

Recommended dimensions for images are 1063 x 271px.

7.2 How can I change security token timeout?

If you want to change the default token lifetime (by default 300 secs) you should Run notepad with administrator rights and edit the file “C:\inetpub\wwwroot\Visure Contributor 7\appsettings.Development.json”

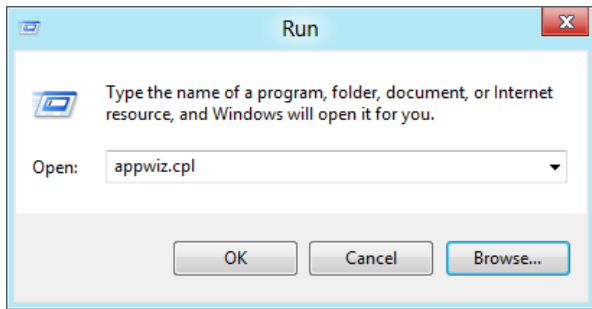
Change the parameter “sessionTimeout” under “AngularSettings” section:

```
"AngularSettings": {  
  "sessionTimeout": "1200",  
  "version": "1.1.0.0"  
}
```

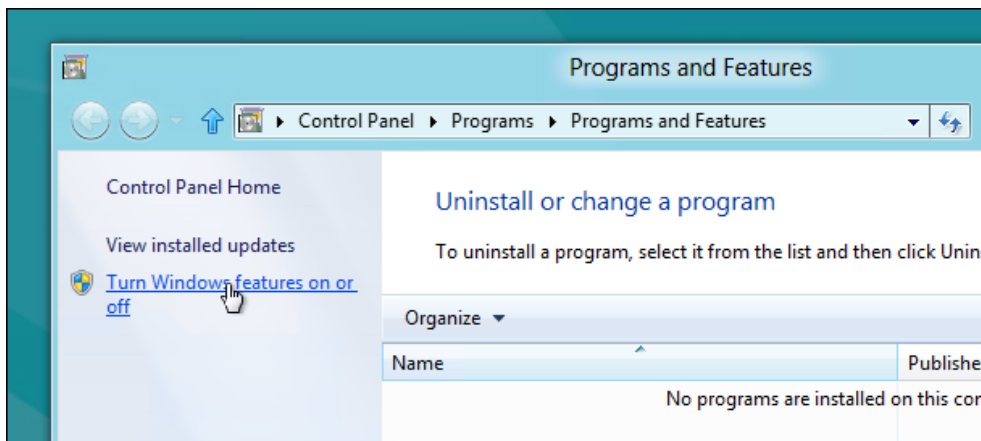
7.3 How can I install IIS?

Internet Information Service is a Windows feature that needs to be enabled.

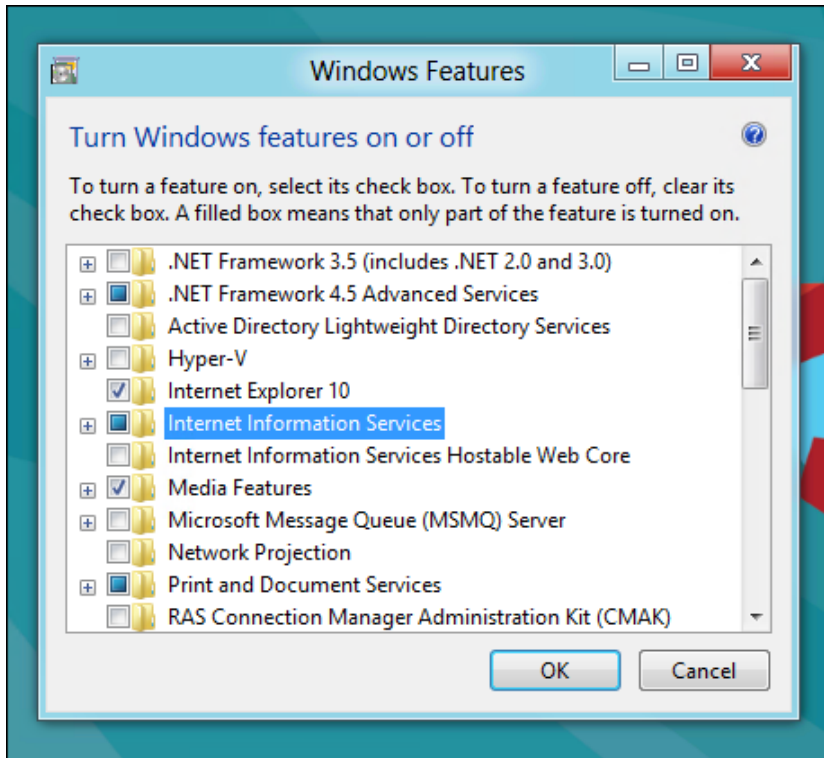
To install it, press the Windows + R key combination to bring up a run box, then type appwiz.cpl and press enter.



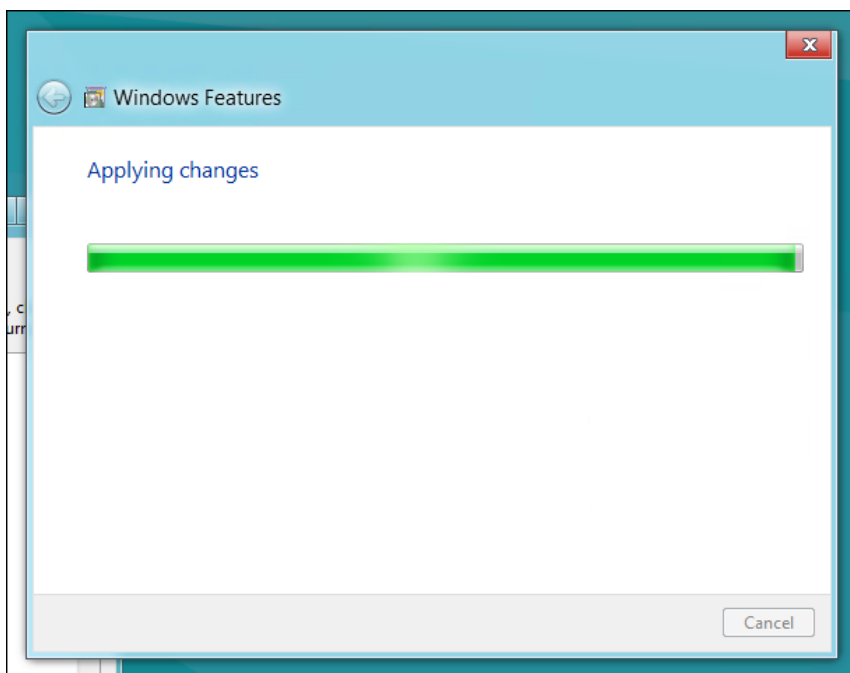
This will open the Program and Features part of the Control Panel, on the left-hand side click on the “Turn Windows features on or off” link.



Now click on the Internet Information Services check box.

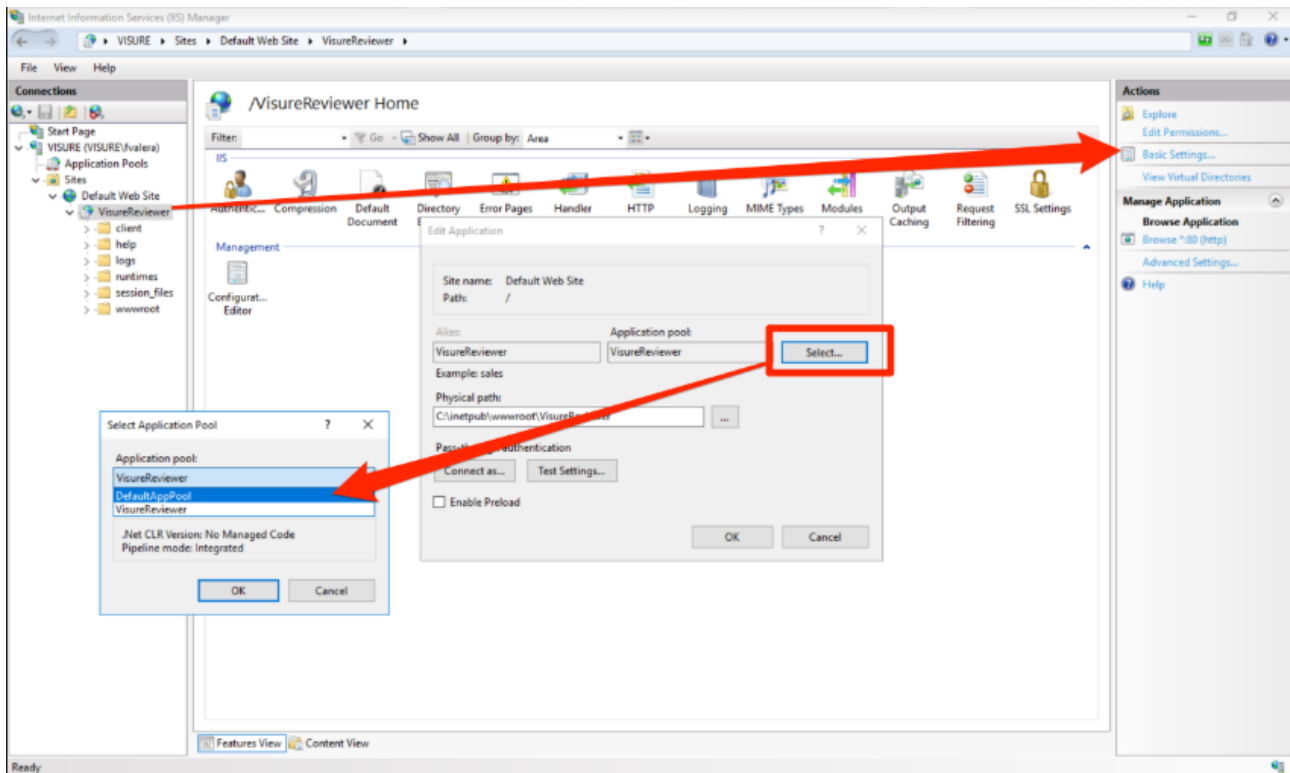


After clicking OK, this dialog will appear on your screen for a while.



7.4 Empty descriptions (Windows Server 2019).

- Change user by DefaultAppPool:



- Give permissions to this user over the descriptions folder: C:\inetpub\wwwroot\VisureContributor 7\session_files
Properties > Security Tab > Edit > Add... > **IIS AppPool\DefaultAppPool** > Check Names > Ok > Full Control

